

# INTERNAL REMOTE MONITORING SYSTEM FOR HOT CELL

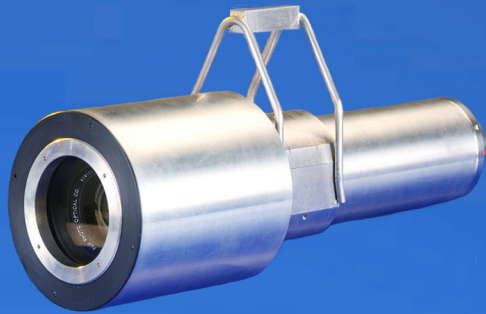


# INTERNAL REMOTE MONITORING SYSTEM FOR HOT CELL



## NUCLEAR PAN & TILT HEADS: BOXER NG

DOSE RATE:	10 <sup>4</sup> Gy/h
TOTAL DOSE:	10 <sup>6</sup> Gy
STROKES:	PAN: 360° TILT: 360°
MOTION SPEED PAN & TILT:	6"/s
ADJUSTABLE LIMIT SWITCHES:	TO 360° ROTATION
LOAD CAPACITY:	UP TO 30 kg
DIMENSIONS:	L331 x W154 x H358
WEIGHT:	13 kg
PLUG JUPITER:	ULC size 4 / 3
HOUSING:	STAINLESS STEEL
AVAILABLE SUPPORT:	CF145 / CF146 CAMERA -PX250 LAMPS
OPTIONAL:	LIFTING BRACKET FOR MANIPULATOR ARM
WEATHERPROOFED:	UP TO IP 66
POWER SUPPLY:	230 VAC - 50 Hz

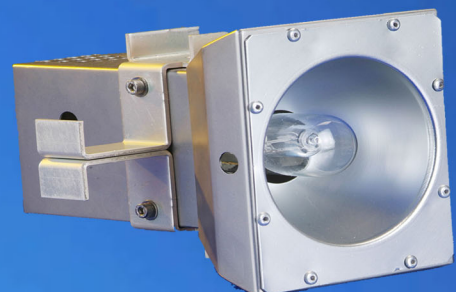


## RADIATION TOLERANT FLOODLIGHT PX250

HOUSING:	STAINLESS STEEL
ASSEMBLY:	BY MANIPULATOR ARM
LAMP:	HALOGEN 250W -LIFETIME: 2000 h
LIGHTING FIELD :	90°
POWER SUPPLY:	230VAC
CONNECTOR:	JUPITER ULC
CABLE:	STRANDED CABLE 1 m
DIMENSIONS:	L 160 x W 120 x D 100 mm
NET WEIGHT:	1 kg

## RADIATION TOLERANT CAMERA CF146NG

PICKUP DEVICE:	VIDICON OR NEWICON 1 " TUBE
RESOLUTION:	750 TV lines
SENSITIVITY:	VIDICON : 1 lux
NEWICON:	10 lux
DOSE RATE:	10 <sup>4</sup> Gy/h
TOTAL DOSE:	10 <sup>6</sup> Gy
LENS:	ZOOM : 35-140 mm RAD HARD
DIMENSIONS:	Ø 125 mm
LENGTH:	460 mm (with LENS)
WEIGHT:	6 kg
PLUG:	JUPITER ULC size 5
ASSEMBLY:	BY MANIPULATOR ARM
CONTROL UNIT:	19" x 3U RACK INCLUDING
	- ZOOM CONTROL
	- PAN & TILT CONTROL
	- LIGHTING CONTROL
OPTIONAL:	RAD HARD BOXER PAN & TILT
	250W HALOGEN LIGHTING



### Head Office

ZI Athélie II - 168 avenue du Serpolet - 13704 La Ciotat Cedex France - Phone : +33 (0)4.42.08.81.19 - Fax : +33 (0)4.42.71.58.44

### Paris - Ile-de-France Branch Office

ZI Les Eglantiers - 16 rue des Cerisiers - CE1540 Lisses - 91015 Évry Cedex France - Phone: +33 (0)1.60.86.14.65 - Fax : +33 (0)1.60.86.98.73

E-mail : [rovdeveloppement@wanadoo.fr](mailto:rovdeveloppement@wanadoo.fr)

Web : [www.rovdeveloppement.com](http://www.rovdeveloppement.com)